

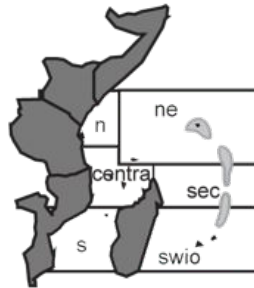
WESTERN INDIAN OCEAN – Tsunami information

DATE/TIME OF THIS ALERT: 11 APRIL 2012; 15:15 (East Africa Time)

Tsunami risk level

The tsunami risk for East Africa is very low, but any impact will occur at spring high tide.

National warning systems will provide updates of national alerts. Conditions may change



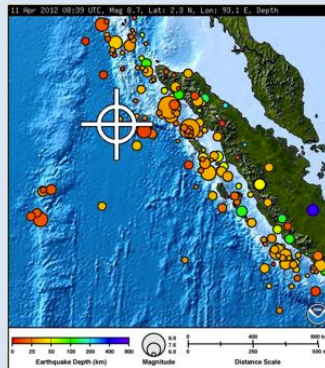
Contact: bleaching@cordioea.org

David Obura & Majambo Jarumani

This sheet is adapted from CORDIO's regional bleaching alert

EARTHQUAKE DETAILS

- 8.2-8.6 on Richter scale
- West of ACEH, SUMATRA.
- Time: 8:39 AM UTC (Universal Time)
(ie. 10:39 AM East Africa Time. 11:39 Islands Time)
- type of earthquake, strike-skip (horizontal)
- after the major earthquake, many small and several large (>8) aftershocks have occurred
- further aftershocks are likely and even a major earthquake may still be possible



TSUNAMI POTENTIAL

- the type of earthquake, strike-skip (horizontal) generally does not induce large tsunamis
- a tsunami warning is announced in Indonesia and across the Indian Ocean
- no reports of tsunami occurrence have been received (4 hours after earthquake)
- estimated arrival time would be approximately 15:00 (islands local time, earliest in the Seychelles); 17:00 (East Africa mainland, local time).
- arrival time is at high spring tides, so inundation may be a risk
- based on past experience it is highly unlikely that a tsunami event has occurred.

Sources:

Pacific Tsunami Warning Center - <http://ptwc.weather.gov/ptwc/?region=3&id=indian.TSUIOX.2012.04.11.0945>

Indian Tsunami Early Warning Center –

http://www.incois.gov.in/DSSProducts/Product_RTWP/dss120411115300_index_RTWP_pub.htm